

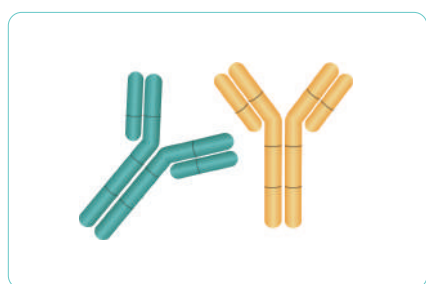
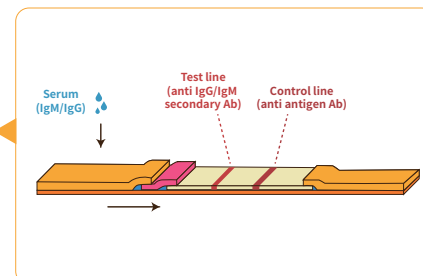
# All Designed for Fighting SARS-CoV-2

Antigens & Matched Antibody Pairs for Diagnostics | Spike Protein Trimer | Pre-coupling Magnetic Beads | Kits

## Antigens for COVID-19 diagnostics

### ■ Specially designed proteins for COVID-19 serological test development

- Authentic conformation and complete glycosylation
- Customized formulation and bulk order available
- High purity, high batch-to-batch consistency and validated bioactivity
- Help to improve the sensitivity and specificity of serological test



## Matched antibody pairs for antigen detection

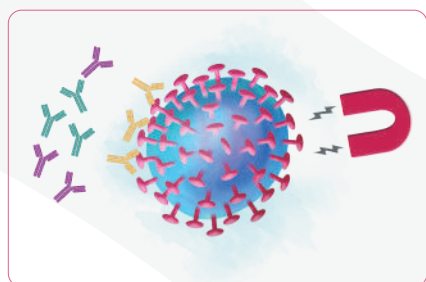
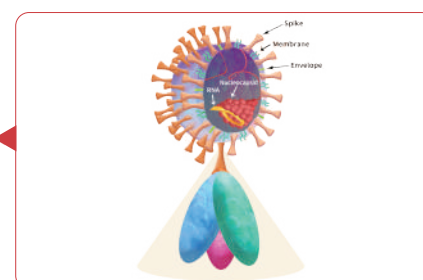
### ■ Matched S1/N antibody pairs for COVID-19 diagnostic kit development

- High sensitivity of 12 pg/mL (ELISA assay)
- Super affinity of 0.01 nM level (BLI assay)
- HEK293 expressed and high batch-to-batch consistency

## Trimer structure of spike protein verified by SEC-MALS&NSEM

### ■ Developed by special technology

- Molecular weight and polymer structure verified by SEC-MALS&NSEM
- Bioactivity verified by SPR, BLI and ELISA
- Biologically function well



## Pre-coupling magnetic beads

### ■ S1 and RBD protein magnetic beads for the neutralizing antibody screening

- High stability, high-effective target capture and minimal non-specific binding
- Ready to use without activation, convenient and efficient
- Greatly save your time and hassle

## SARS-CoV-2 kit products for research

### ■ Inhibitor & neutralizing antibody screening kits, antibody titer assay kits and pre-coated plates for SARS-CoV-2 research

- Expertise in protein biotinylation, fast and easy-to-use
- High throughput, high flexibility, high reproducibility, high sensitivity and high stability
- Facilitate the identification and characterization of SARS-CoV-2 inhibitors

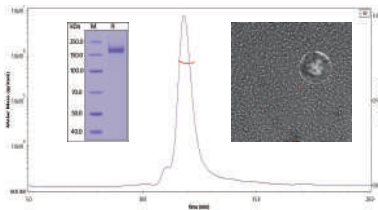


**SPR/BLI/ELISA Protocols Offered for free**

■ **Cat.No.** [SPN-C52H8](#)

**Product:** SARS-CoV-2 (COVID-19) S protein (R683A, R685A), His Tag, active trimer (MALS verified)

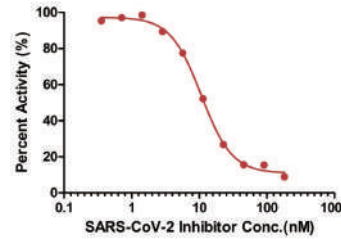
The purity, molecular weight and polymer form were verified by SDS-PAGE, SEC-MALS & NSEM.



■ **Cat.No.** [EP-105](#)

**Product:** SARS-CoV-2 Inhibitor Screening Kit

Inhibition of Human ACE2 [Biotinylated] :SARS-CoV-2 S protein RBD Binding by SARS-CoV-2 inhibitor.

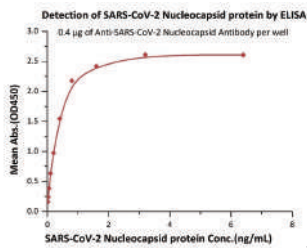


Serial dilutions of SARS-CoV-2 inhibitor (1:2 serial dilutions, from 20 µg/mL to 0.039 µg/mL (180 nM to 0.35 nM)) was added into Biotinylated ACE2: SARS-CoV-2 S protein RBD binding reactions. The assay was performed according to the above described protocol. Background was subtracted from data points prior to log transformation and curve fitting.

■ **Cat.No.** [NUN-S46](#), [NUN-S47](#)

**Product:** Anti-SARS-CoV-2 Nucleocapsid Antibody, Mouse MAb

High sensitivity of 12 pg/mL (ELISA assay)

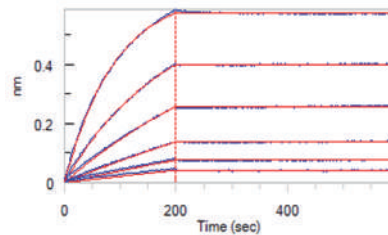


Immobilized Anti- SARS-CoV-2 Nucleocapsid antibody, mouse Mab (Cat. No. [NUN-S46](#)) at 4 µg/mL, add increasing concentrations of SARS-CoV-2 Nucleocapsid protein and then add Biotinylated Anti- SARS-CoV-2 Nucleocapsid antibody, mouse Mab (Cat. No. [NUN-S47](#)). Detection was performed using HRP-conjugated streptavidin with sensitivity of 12 pg/mL.

■ **Cat.No.** [NUN-S47](#)

**Product:** Anti-SARS-CoV-2 Nucleocapsid Antibody, Mouse MAb

Super affinity of 0.01 nM level(BLI assay)



Anti-SARS-CoV-2 Nucleocapsid Antibody, Mouse MAB(Cat. No. [NUN-S47](#)) can bind SARS-CoV-2 Nucleocapsid Protein (Cat. No. [NUN-C5227](#)) with an affinity constant of 24.7pM determined in BLI assay (ForteBio Octet Red96e).

Scan the QR code for more information



**Selected product list**

| Category             | Molecule                | Cat. No.                  | Species   | Product Description   |
|----------------------|-------------------------|---------------------------|---|---|
| Proteins             | S protein               | <a href="#">SPN-C52H8</a> | SARS-CoV-2  | SARS-CoV-2 (COVID-19) S protein (R683A, R685A) , His Tag, active trimer (MALS verified) |
|                      | S1 protein              | <a href="#">S1N-C82E8</a> | SARS-CoV-2  | Biotinylated SARS-CoV-2 (COVID-19) S1 protein, His,Avitag™ (MALS verified)              |
|                      | S1 protein              | <a href="#">S1N-C52H4</a> | SARS-CoV-2  | SARS-CoV-2 (COVID-19) S1 protein, His Tag (MALS verified)                               |
|                      | S2 protein              | <a href="#">S2N-C52H5</a> | SARS-CoV-2  | SARS-CoV-2 (COVID-19) S2 protein, His Tag   |
|                      | S protein RBD           | <a href="#">SPD-C82E9</a> | SARS-CoV-2  | Biotinylated SARS-CoV-2 (COVID-19) S protein RBD, His,Avitag™ (MALS verified)           |
|                      | S protein RBD           | <a href="#">SPD-C52H3</a> | SARS-CoV-2  | SARS-CoV-2 (COVID-19) S protein RBD, His Tag (MALS verified)                            |
|                      | S protein RBD           | <a href="#">SPD-C5259</a> | SARS-CoV-2  | SARS-CoV-2 (COVID-19) S protein RBD, Mouse IgG2a Fc Tag                                 |
|                      | Nucleocapsid protein    | <a href="#">NUN-C51H9</a> | SARS-CoV-2  | SARS-CoV-2 (COVID-19) Nucleocapsid protein, His Tag                                     |
| Antibodies           | S1 protein              | <a href="#">S1N-M122</a>  | Mouse   | Anti-SARS-CoV-2 Spike S1 Antibody, Chimeric MAB   |
|                      | Antibody Pair           | <a href="#">S1N-M130</a>  | Mouse   | Anti-SARS-CoV-2 Spike S1 Antibody, Chimeric MAB   |
|                      | Nucleocapsid protein    | <a href="#">NUN-S46</a>   | Mouse   | Anti-SARS-CoV-2 Nucleocapsid Antibody, Mouse MAB  |
|                      | Antibody Pair           | <a href="#">NUN-S47</a>   | Mouse   | Anti-SARS-CoV-2 Nucleocapsid Antibody, Mouse MAB  |
|                      | S protein RBD           | <a href="#">SAD-S35</a>   | Human   | Anti-SARS-CoV-2 neutralizing antibody, Human IgG1                                       |
| Nucleocapsid protein | <a href="#">NUN-S41</a> | Human                     | Anti-SARS-CoV-2 Nucleocapsid Antibody, Human IgG1 |   |
| Kits                 | S1 protein              | <a href="#">TAS-K001</a>  | SARS-CoV-2  | Anti-SARS-CoV-2 Antibody IgG Titer Serologic Assay kit (Spike protein S1)               |
|                      | S protein RBD           | <a href="#">TAS-K002</a>  | SARS-CoV-2  | Anti-SARS-CoV-2 Antibody IgG Titer Serologic Assay kit (Spike protein RBD)              |
|                      | S protein RBD           | <a href="#">TAS-K003</a>  | SARS-CoV-2  | Anti-SARS-CoV-2 Neutralizing Antibody Titer Serologic Assay kit                         |
|                      | S protein RBD           | <a href="#">EP-105</a>    | SARS-CoV-2  | SARS-CoV-2 Inhibitor Screening Kit  |
| Beads                | S1 protein              | <a href="#">MBS-K001</a>  | SARS-CoV-2  | SARS-CoV-2 Spike S1 protein-coupled magnetic beads                                      |
|                      | S protein RBD           | <a href="#">MBS-K002</a>  | SARS-CoV-2  | SARS-CoV-2 Spike protein RBD-coupled magnetic beads                                     |

\*For the complete product list, please go to [www.acrobiosystems.com](http://www.acrobiosystems.com).

[Click Here](#)